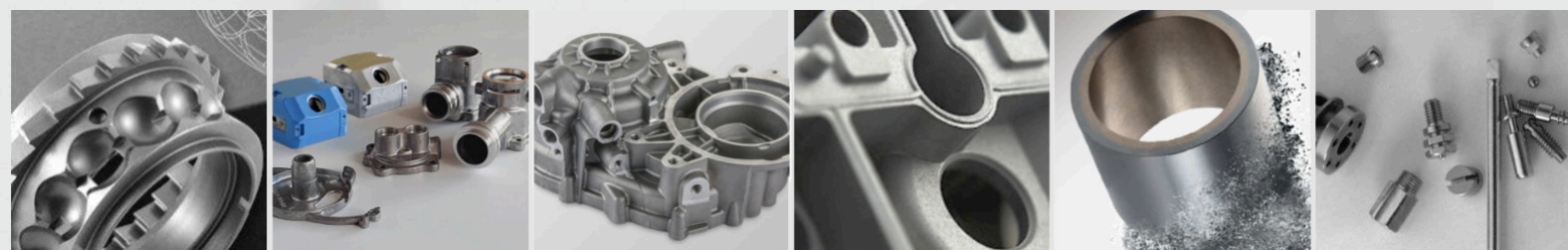


# **DMS** INDUSTRIEVERTRETUNGEN



**Cold forging**  
**Aluminium die casting**  
**Zinc die casting**  
**Sinter technology**  
**Turning technology**  
**Sensors and electronics**

**HECKLER**

Wir formen Stahl.

heckler.de

Solid, (a-)symmetrical cold extrusion parts made of steel (10 - 300 g) are formed at room temperature on toggle, eccentric or multi-stage cross transfer presses with a press force of up to 10,000 kN. The work hardening process during impact extrusion results in an increase in tensile strength and yield strength of up to 25% compared to the original material in the forming area. Where necessary, post-processing is carried out on state-of-the-art CNC machining centres.

Heckler AG, founded in 1950 and employing around 390 people across the Group is represented at locations in Germany (Baden-Württemberg, Saxony) and Romania.

The company specialises in the series production of ready-to-fit moulded parts.

In-house mould and tool making.



## Cold forging

**MALSA**

Aluminium Die Casting

malsa.com.es

MALSA realises part weights between 10 and 8,000 g in aluminium die casting. By casting at around 720 °C and repeated holding pressure during the solidification process, parts with high strength and dimensional accuracy are produced at low part weights. The alloys EN AC 47100 and EN AC 43500 are predominantly processed in 14 casting cells ranging from 250 to 1,400 tonnes. Finishing and further processing in 14 CNC machining centres.

Metalúrgica Del Aluminio S.A., or MALSA for short, was founded in 1989, currently has around 160 employees and operates at three sites near Toledo/ Madrid in Spain.

MALSA has a high level of expertise in the manufacture of pressure-tight parts.

The company has its own mould and tool construction.



## Aluminium die casting

**LOMO**

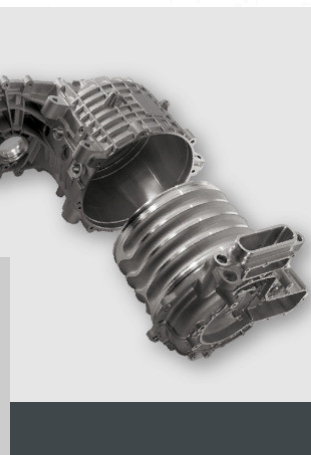
lomopress.com

Our partner Lomopress moulds part weights up to around 35 kg. All 21 die-casting cells allow casting with vacuum technology and are equipped with automatic systems for detailed data acquisition. All common alloys (including EN AC 44300, EN AC 43400, EN AC 44100, EN AC 46100, EN AC 47100) and special alloys such as EN AC 43500, Magsimal-59 are processed. 55 CNC machining centres of the latest generation are used for precision machining.

The company mainly supplies OEMs and TIER 1 in the automotive sector, as well as the lighting, electronics and renewable energy industries.

Lomopress S.r.l. was founded in 1994 and employs around 320 people in four production plants in and around Villa Carcina (northern Italy, Brescia region).

In-house mould and tool making is provided.



## Aluminium die casting

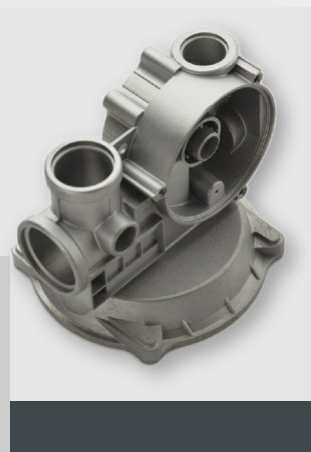
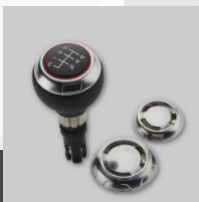
**NUOVA FRAMAR**

nuovaframmar.it

Our partner Nuova Framar s.r.l. manufactures zinc die-cast parts from 10 g to 1.5 kg in the most common alloys. Production takes place on 12 die-casting machines with clamping forces ranging from 90 to 22 tonnes. Unlike aluminium, we can produce in zinc die casting with zamac alloys wall thicknesses of less than 1 mm.

Mould design and manufacture, deburring, barrel finishing and sand blasting are carried out in-house. High speed CNC vertical machining centres are available for finishing.

Nuova Framar, based in Polaveno, also in the Brescia region, was founded in 1969 and currently employs around 45 people.



## Zinc die casting



The main advantages of sintering technology are the almost 100% utilisation of materials, the production of complex geometries with high dimensional accuracy and reproducibility.

R. Biemme-tech srl was founded in 2004 and is based in Fano, north of Ancona, with around 60 employees. The company produces sintered parts from 5 g to 3.5 kg in steel, stainless steel, copper or magnetic material. The machinery includes 12 presses with forces from 4 to 750 tonnes, 5 furnaces up to 1,450°C and fully automated CNC machining centres.

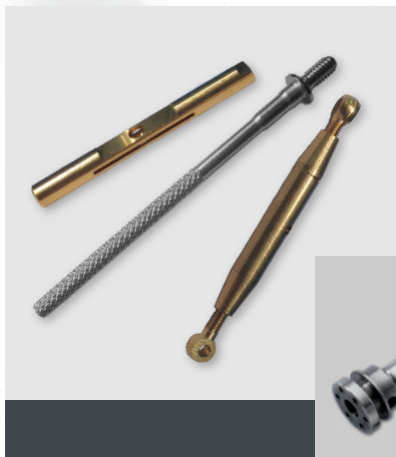


Tooling is designed and manufactured in-house and the company is also available as a development partner for component layout.



[rbiemmetech.it](http://rbiemmetech.it)

## Sinter technology



Our partner Walch Automatendrehteile GmbH in Remchingen near Pforzheim manufactures turned parts from all machinable materials with diameters from 0.6 - 38 mm and lengths up to 1,000 mm.

Production takes place on 30 mechanical sliding headstock lathes, 12 CNC automatic lathes, 9 ring lathes and 6 rotary transfer machines. Approximately 20 finishing machines are used for turning, drilling, pressing, pre-assembly, bending and milling.

Fixtures and tools can be manufactured in the company's own workshop.

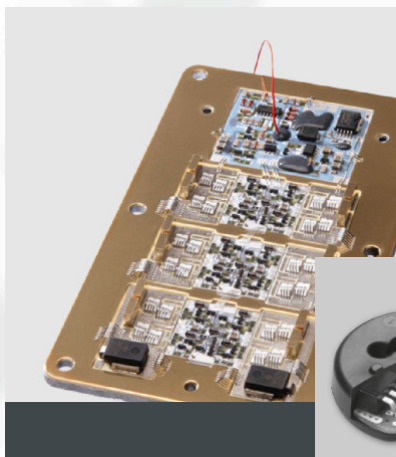


WALCH Automatendrehteile is a family business founded in 1954 and employs around 25 people.



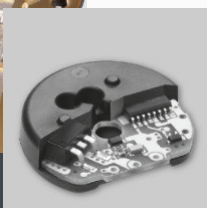
[walchdrehteile.de](http://walchdrehteile.de)

## Turning technology



HE System Electronic, part of Magna International since mid-2024, is a medium-sized electronics and microsystems technology company based in Veitsbronn, near Nuremberg.

HE has two main areas of activity: the development and production of customer-specific electronic modules and sensors, and power electronics. Sensor elements from a wide range of technologies and manufacturers are used for applications where off-the-shelf solutions are not sufficient. For power applications in automotive and industrial electronics, the focus is on ceramic-based assembly technologies.



Innovative production technologies such as vacuum condensation soldering, bonding and assembly technology, low temperature sintering and transfer moulding are used.

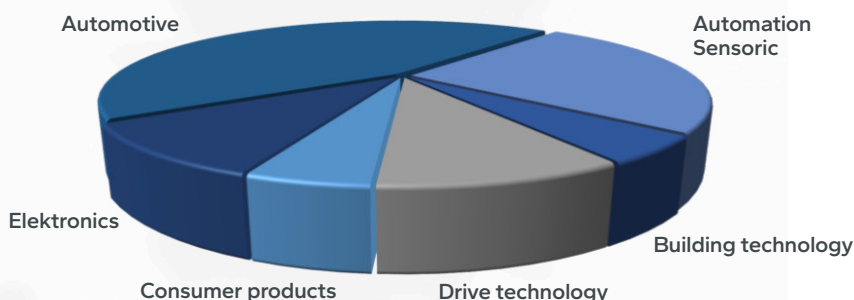


[he-system.com](http://he-system.com)

## Sensors and electronics

Our partners in Germany, Italy and Spain specialise in the manufacture of complex parts from drawings in a variety of material groups and production technologies.

The focus of our activities is on metalworking and machining in these areas:





## We are

a high-performing team of 4 employees who represent the suppliers we work for in the area of sales.

Our work is focussed on two key areas:

### 1. Personalised support and close cooperation with our customers

Availability and stringent communication are the decisive factors, especially when implementing complex projects in series production.

Thanks to our many years of experience and expertise, we proactively support our customers at every stage.

### 2. Acquiring new customers for our partners via various channels

We emphasise the individual strengths of our partners in a targeted manner. There are certainly a variety of ways to produce your parts - we support you in finding the most suitable partners and processes.



We have been successfully working for customers and manufacturers for over 30 years!



DMS Industrievertretungen GmbH  
Gottlieb-Manz-Strasse 10 | 70794 Filderstadt | +49 711 90219 60  
[www.dms-vertretungen.de](http://www.dms-vertretungen.de) | [info@dms-vertretungen.de](mailto:info@dms-vertretungen.de)

